

RE  
EA  
DY  
Y

READY TO  
LEARN  
PROVIDENCE

# Preliminary Summary of Early Reading First (ERF-II) Child Assessment Data

Ready to Learn Providence

*A Program of The Providence Plan*

January 2010



READY TO  
LEARN  
PROVIDENCE

# Number of Classrooms and Children Administered the PPVT-III and PALS PreK

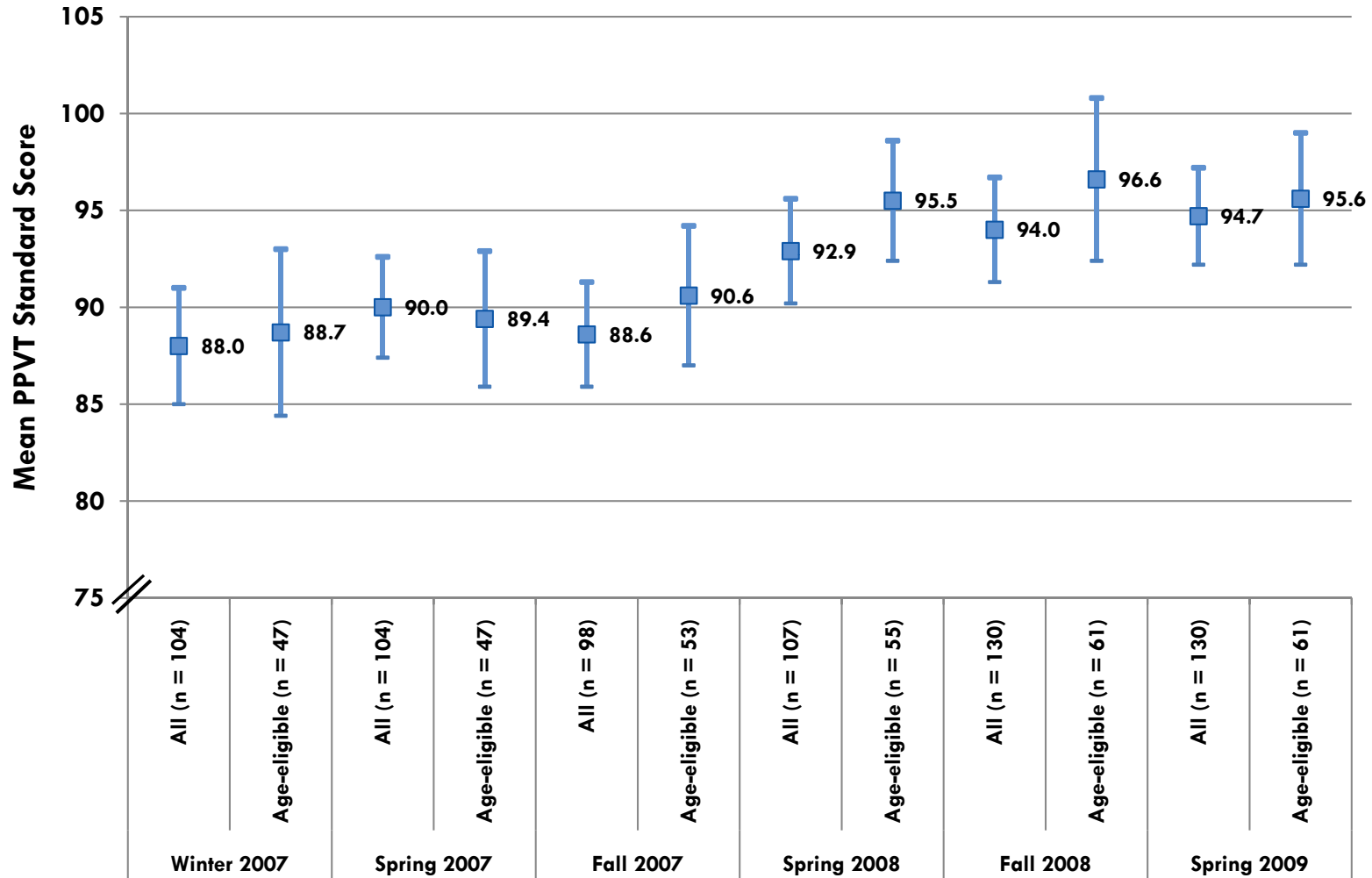
• ERF II staff worked in 10 classrooms in 2006-07 and 2007-08, but recruited three additional classrooms in 2008-09.

• Between approximately 100 and 130 children were tested using the *Peabody Picture Vocabulary Test – Third Edition* (PPVT-III) (Dunn & Dunn, 1997) in the fall and spring of each year, and between about 50 and 60 of these children were eligible to attend kindergarten as of the fall after spring testing.

• Approximately 65 children were tested using the *Phonological Awareness Literacy Screening (PALS) PreK* (Invernizzi, Sullivan, Meier, & Swank, 2004) in the fall and spring of each year, and between 50 and 60 of these children were eligible to attend kindergarten as of the fall after spring testing.

	2006-07	2007-08	2008-09
No. classrooms	10	10	13
PPVT-III			
<b>All</b>			
No. children tested at least once	104	202	184
No. children tested in fall and spring	104	107	131
<b>Kindergarten-eligible</b>			
No. children tested at least once	47	82	65
No. children tested in fall and spring	47	55	61
PALS PreK			
<b>All</b>			
No. children tested at least once	62	134	127
No. children tested in fall and spring	62	63	67
<b>Kindergarten-eligible</b>			
No. children tested at least once	50	82	65
No. children tested in fall and spring	50	55	60

# ERF II – Mean PPVT-III Standard Scores (with 95% Confidence Intervals)



NOTE: "All" refers to all children tested in both the fall and spring of each academic year (i.e., 2006-07, 2007-08 and 2008-09). "Age-eligible" refers to children who participated in the ERF II project for at least 6 months, were tested in the fall and spring of each academic year, and were eligible to attend kindergarten as of the fall after their spring testing.

SOURCE: R2LP ERF II database as of September 11, 2009.

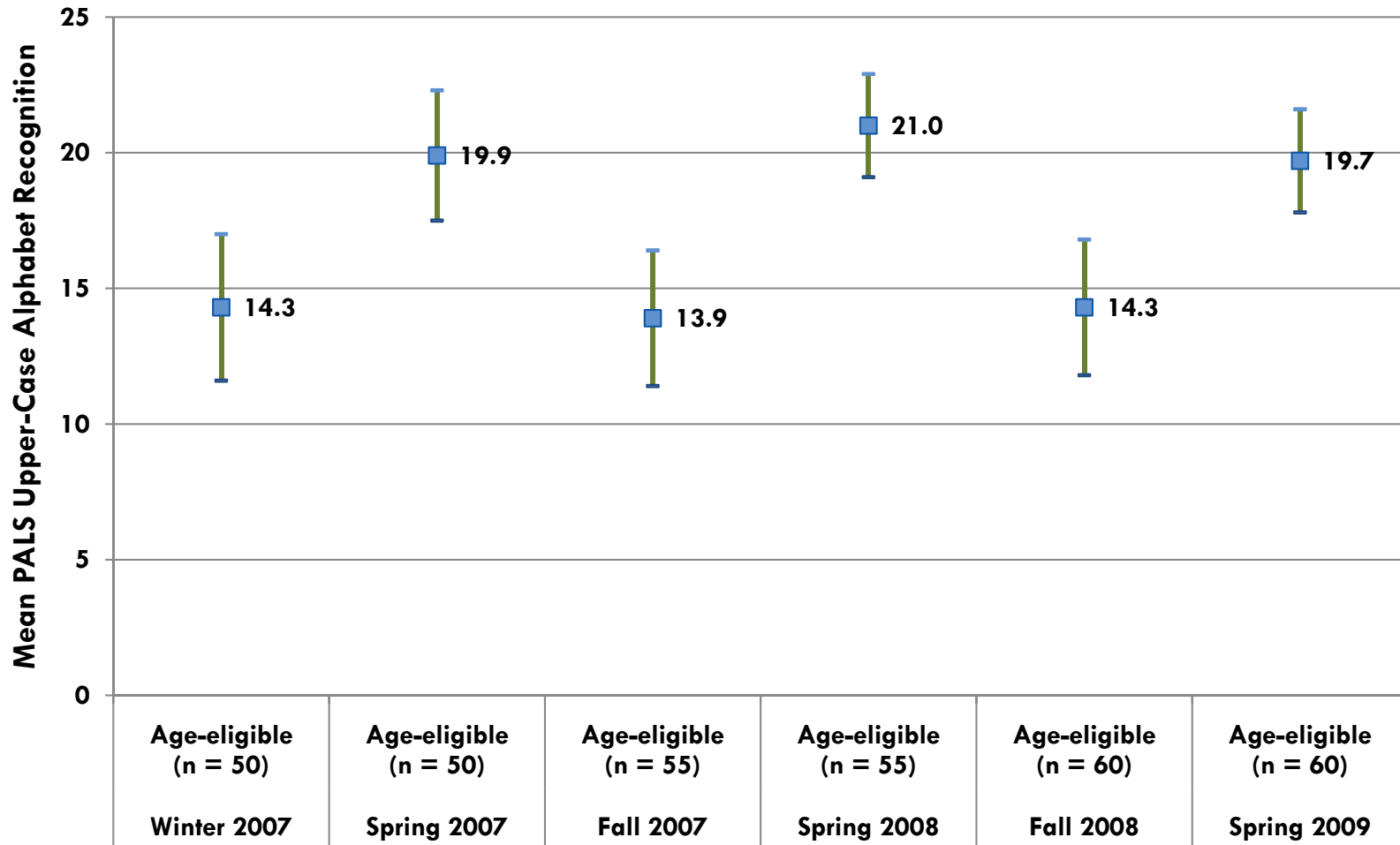
## ERF II – PPVT-III

- Average PPVT-III standard scores ranged between 85 and 100 (using 95% confidence intervals) from the winter of 2007 through the spring of 2009. Thus, all of these average scores fell within one standard deviation of the normative mean.
  
- While the average PPVT-III standard scores of each year's cohort appeared to increase over time, the addition of classrooms in the project's third year, enrolling children from more advantaged socioeconomic circumstances, complicates comparisons across years.



READY TO  
LEARN  
PROVIDENCE

# ERF II – Mean PALS PreK Upper-Case Alphabet Recognition (with 95% Confidence Intervals)



NOTE: "Age-eligible" refers to children who participated in the ERF II project for at least 6 months, were tested in the fall and spring of each academic year, and were eligible to attend kindergarten as of the fall after their spring testing.  
SOURCE: R2LP ERF II database as of September 11, 2009.



READY TO  
LEARN  
PROVIDENCE

## ERF II – PALS PreK Upper-Case Alphabet Recognition

- Kindergarten-eligible children tested twice per year using the PALS PreK exhibited increases in their average Upper-Case Alphabet Recognition scores, from about 14 letters in the fall to 20 letters in the spring.
- This level of change was consistent across each of the project's three years.

# Next Steps in ERF-II Analyses

- R2LP assessed children in ERF-II classrooms in Fall 2009 and will conduct a final set of assessments in Spring 2010. Scores will be analyzed pre- and post- and will be incorporated into a final, comprehensive analysis of all assessment data collected across eight assessment sessions.
- Language and literacy environments and practices of ERF-II classrooms have been observed on seven occasions since the program began in 2007 using the *Early Language & Literacy Classroom Observation (ELLCO)* (Smith, Dickinson, Sangeorge, & Anastasopoulos, 2002). Final observations are scheduled for Spring 2010 after which R2LP will conduct a longitudinal analysis from teachers/classrooms observations on three or more occasions between 2007 and 2010.